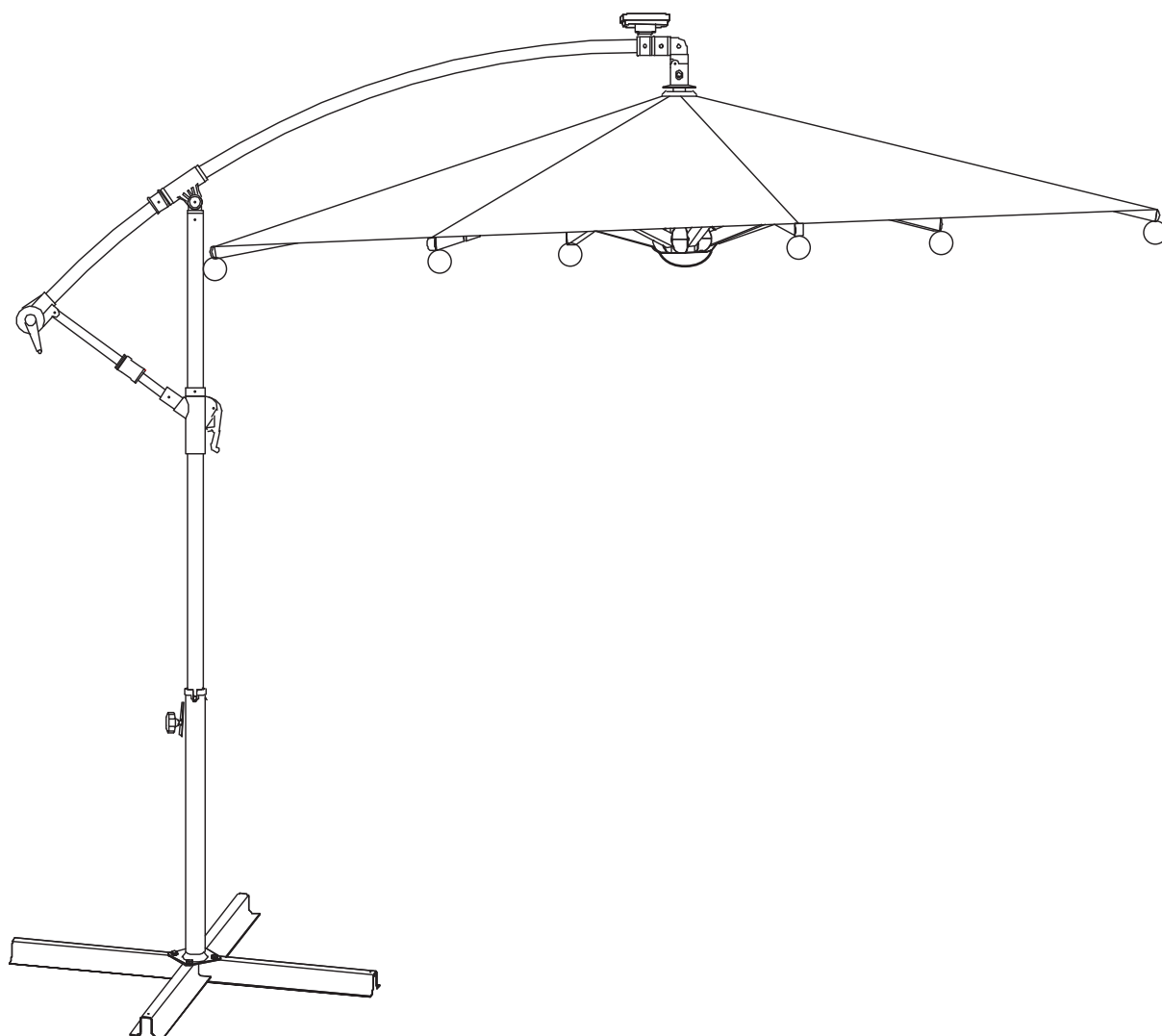


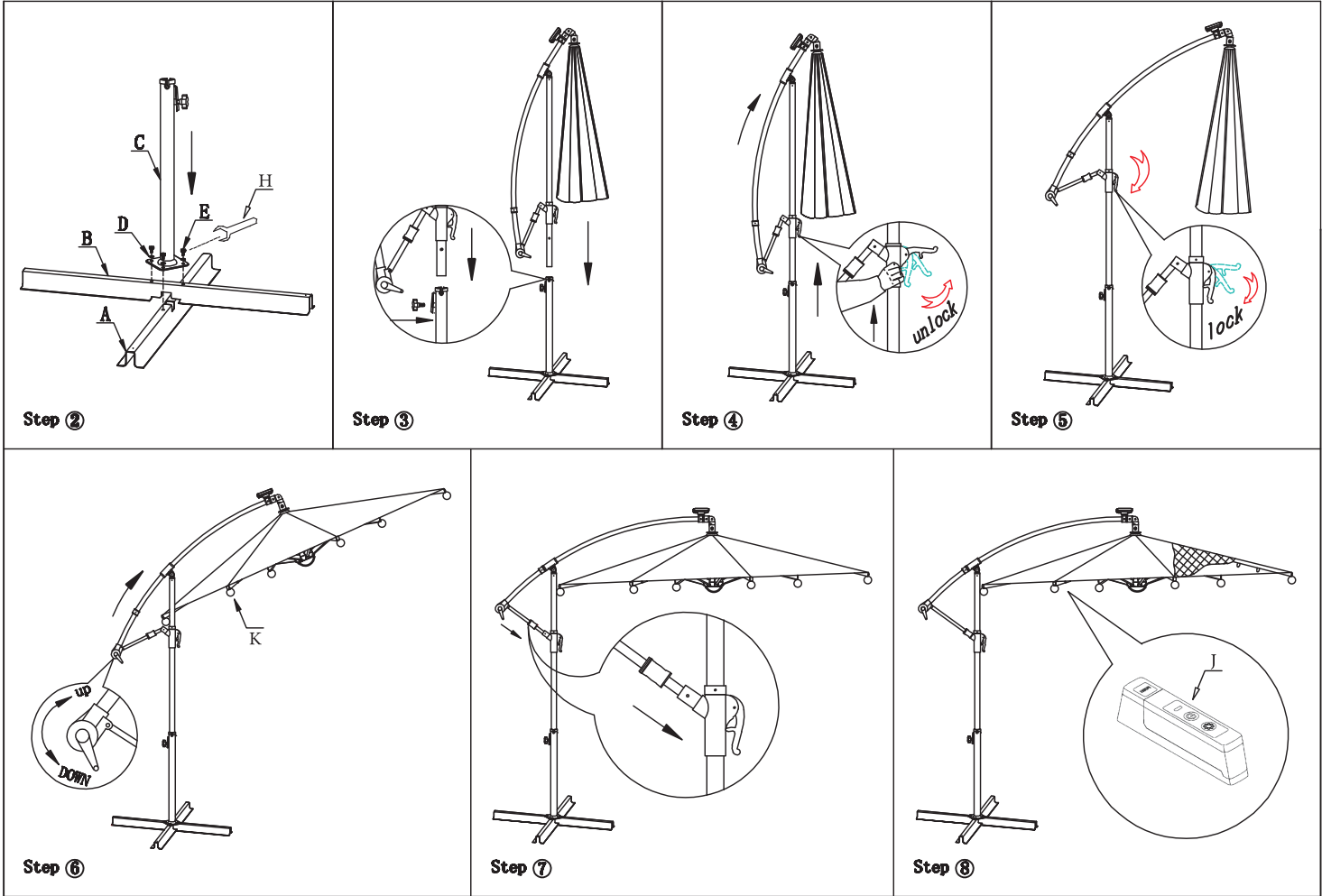
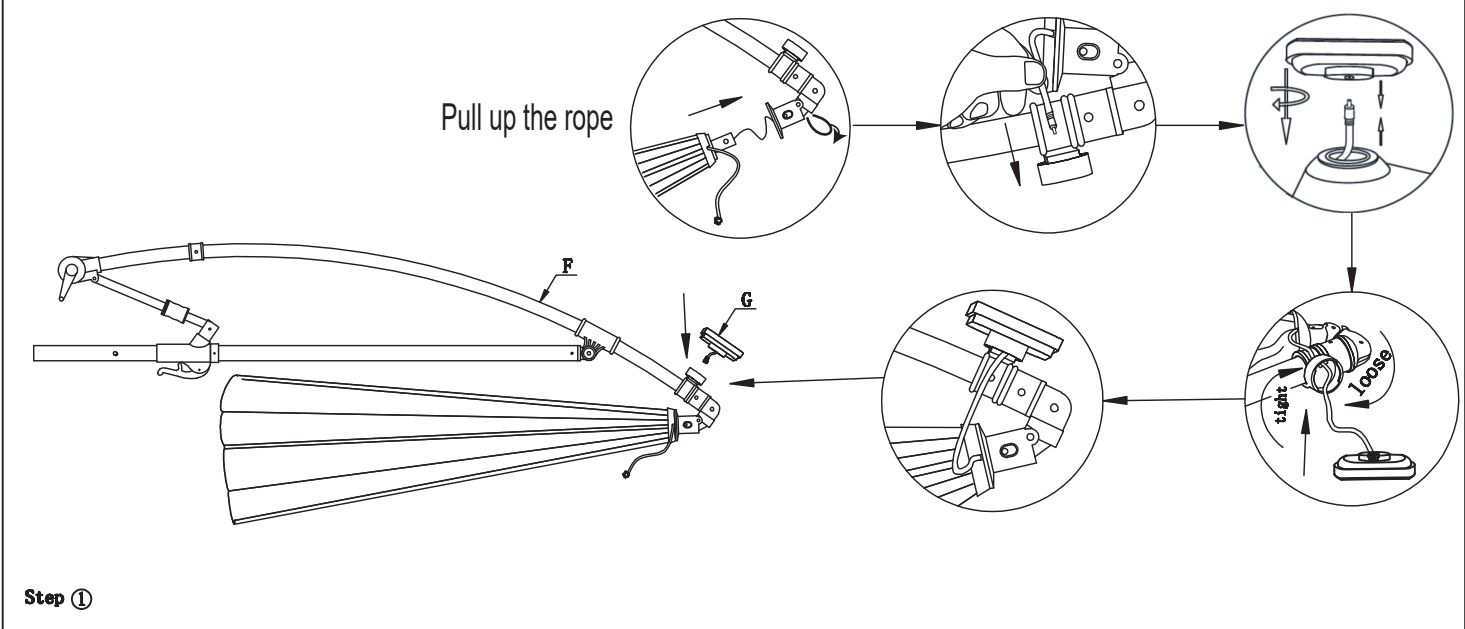
Banana Cantilever Parasol With Solar LED lights

Assembly Instructions - Please keep for future reference FODSCXIN250401GY
FODSCXIN250401CF

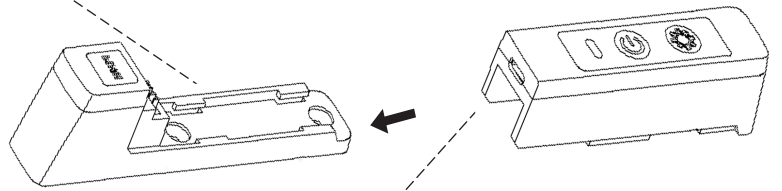
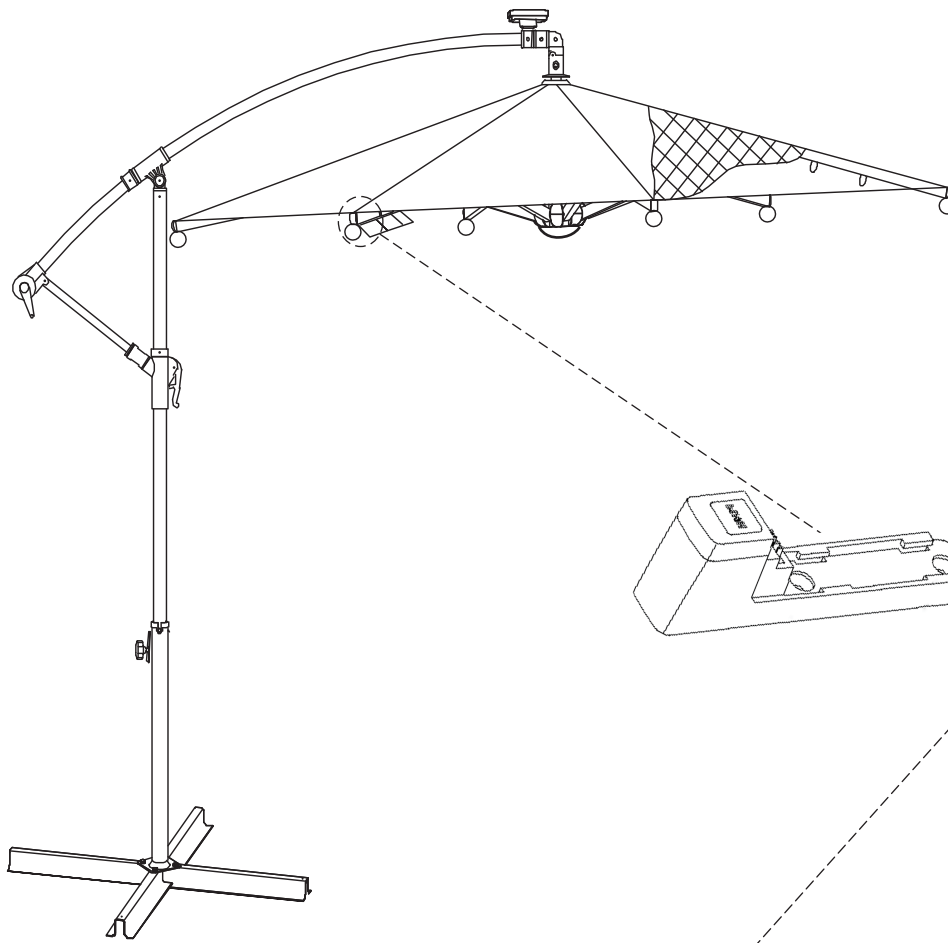


**IMPORTANT: PLEASE KEEP THIS BOOKLET FOR FUTURE REFERENCE.
THIS IS IMPORTANT INFORMATION REGARDING THE USE AND
CARE OF YOUR GARDEN FURNITURE.**

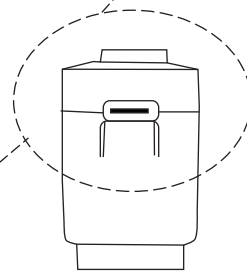
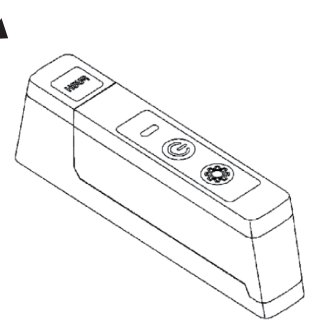
A x 1 	B x 1 	C x 1 	D x 4 $\phi 16 \times 8.5 \times 0.8 \text{mm}$
E x 4 $\phi 8 \times 16 \text{mm}$ 	F x 1 	G x 1 	H x 1
I x 1 	J x 1 	K x 8 	



Assembly Instructions

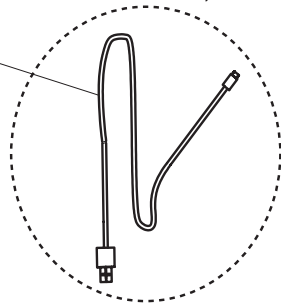


Press button to release the Battery Switch



USB Port

1



Power Bank



Plug and Powder Bank are not included, they are for illustrative purposes only.

Operate Battery Box Instructions

Battery Box Electrical Parameters

1. Battery: #18650, 2200MAH 3.7V
2. Recharger charging time: 4-5 hours.
3. Solar charging time: 12 hours light time (depending on the solar light intensity)
4. Lamp power (adjustable): 0.8-2W (the specific power depends on the actual situation)
5. Duration of use: 6-7 hours (determined according to battery capacity and usage)

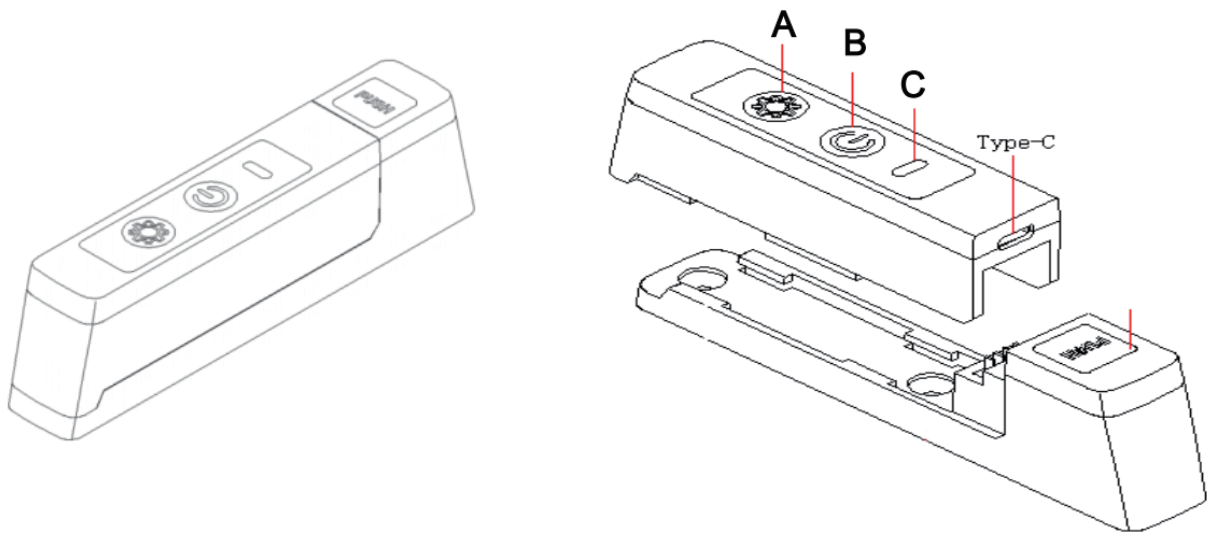
Operation:

B: ON/OFF BUTTON

A: Adjust the LED brightness button

C: Indicator light

Type-C port: Used for charging LED batteries



Warnings:

1. Fully Charged for the first usage.
2. Avoid collisions and drops.
3. The LED lights ideally need to be charged in sunlight. It can be charged in daylight but will take longer to charge.
4. Stored in a dry loction when not use.
5. Always charge in a dry environment.

